

# VYF

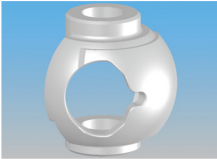
series

Applicative units for: Steam system, boiler facility... etc

Working pressure: 0.98Mpa (10kgf/cm2)

Working Temp.:10°C~160 °C

Connection: Flanged end



V-PORT

Model No.	H45A2250-VYF--	H70A2275-VYF--	MH67A2275-VYF--
Size range	DN25.DN40.DN50	DN25.DN40.DN50	DN25.DN40.DN50
Voltage supply <small>50/60Hz</small>	AC220V ±10%	AC220V ±10%	AC220V ±10%
Control Signal	ON-OFF	ON-OFF	4~20mA / 2-10V
Running Current	0.2A	0.3A	0.2A
Timing Nominal Driving quarter turn to open close gate of valve	50Hz	60sec	95sec
	60Hz	50sec	75sec
Motor Power	10W	10W	10W
Performance Operation	Consecutive running	Consecutive running	Consecutive running
Insulation level		E class	
Waterproof level		IP66	
Storage Temp. Range		-10°C to 50°C	
Operating Humidity Range		5 to 90% RH	
Electrical connection		1/2" cable connector	
Diameter of cable		1.25mm	
Optional Items	Auxiliary switches 2(SPDT) / Potentiometer 1KΩ		4~20mA Feedback

FLANGE:JIS 10K VPA:STEAM

N	SIZE	∅C	∅D	∅h*N	L	A	N.W ±1
1	25	90	125	∅19*4	127	178	9.5
1 <sup>1</sup> / <sub>2</sub>	40	105	140	∅19*4	165	183	12
2	50	120	155	∅19*4	178	189	12.5

ITEM	PARTS	MATERIAL
1	BODY	FC25
2	BALL SEAT	BC
3	BALL	SCS13
4	SEAT	PTFE+GRAPHITE
5	SEAT RING	SUS304
7	O-RING	VITON
8	STAY RING	SUS304
10	STEM	SUS304
11	WASHER	BC
13	SLEEVE	PTFE+AL
15	BONNET	FC25
17	GLAND PACKING	ASB+TFE
20	WASHER	SUS304
21	GLAND FLANGE	BC
22	BOLT	SUS304

